



**mac**thermal

**Extensive  
Text Features**

**Powerful  
Graphics**

**Static Bar  
Codes**

**Sequential  
Bar Codes**

**Sequential  
Numbering**

**Programmable  
Date Printing**

**Full WYSIWYG**

**Data Import**

**Field Merging**

**Rotation**

**Multiple  
Language**

**Print-Only  
Version**

**Prompted  
Fields**

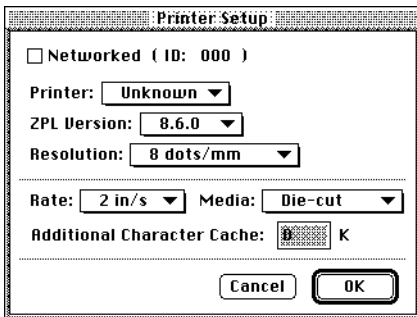
**AppleScript  
Support**

**MacTHERMAL** has been developed by a team with many years of experience in the origination and printing of labels and the design of Apple Macintosh software. This combined expertise is unique as it is able to draw upon specialist knowledge of a wide range of user requirements.

The result is a product which responds to the needs of those wanting a simple but effective solution for in-house label production.

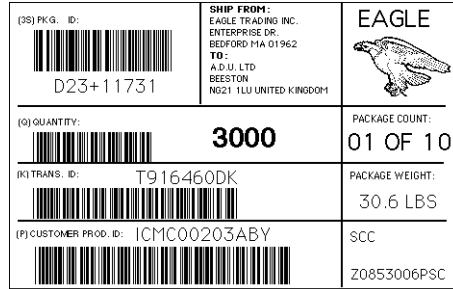
The labeling needs of all types of business are becoming ever more complex. Products or consignments being shipped across the world have to be labeled to an increasing variety of specifications. To date, many label printing options have failed to offer adequate features for handling the wide variety of label designs being demanded.

MacTHERMAL simplifies and speeds up label design and printing like no other program available:



MacTHERMAL has been specially developed to work with a wide range of thermal printers. A wide variety of print widths, print resolutions and speeds are available within each range. After printing, labels may be rewound onto reels, automatically sheeted or dispensed ready for application. MacTHERMAL will print to any size of label with any number of labels across across the web. The

built-in sensor on the printer registers the label for accurate printing. The sensor will detect the gaps between labels or a printed mark on the reverse of continuous material.



Using MacTHERMAL could not be simpler: The first time you use the program, you select the type of printer you are using from a list of the entire range. The choice you make is stored permanently (or until you change printer type). From then on,

MacTHERMAL gives you only the text and bar code size options which relate to your particular printer.

Label size is entered using the Label Set Up feature. Next, you may begin designing your label. Clicking on any of the icons in the Toolbox, selects a particular type of field to be added to the label design.

**Text** can be set in a number of built-in typefaces. You also have the option of using any of the fonts on your Macintosh, with all of the typographic control you expect from the best Mac software. In addition to variable size and leading, characters may also be scaled horizontally and aligned left, right or centre.

**Sequential Numbering** and barcoding are both available. You simply set the start point, the amount to increment and the number of repeats, and numbering is automatically controlled throughout the print run.

**Bar Codes** - A full range of bar codes is available - EAN, ITF, UPC, ISBN, Code 39 and Code 128. Features include automatic check digit verification, full height control, and variable magnification.

	Text
	Incrementing Numbers
	Bar Codes
	Graphics
	Dates
	Boxes
	Lines

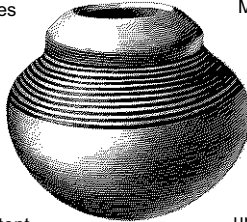
**The Graphics features** of MacTHERMAL

exceed those of other thermal printer packages. Scanned images and other PICT's can be printed in high quality.

the option to import label quantity directly from the text file. You can mix any number of text, barcode and graphic fields within each import file.

MacTHERMAL also provides **Programmable Date Printing**. A number of date formats are available including Julian dating. Printed dates are automatically generated, either as the current date or offset by a user defined number of days (e.g. current day + 7 days for a product with a shelf life of one week).

**Print Run Programming** A frequent requirement is that of changing label content based on a common layout. MacTHERMAL gives you the power, through its Job Profile window, to define an entire print run with changing quantities, text, graphics ,barcodes and numbers.



The **Import Variations** feature, allows you to import all label content directly from a text, spreadsheet or database file. Any regular ASCII text file is compatible. This facility is of particular use if you need to label inventory or product shipments which have previously been recorded on computer. You simply link the fields in the label to the columns in the data file and all of your label content is automatically imported without the need to key in.

**Full Control** over your label designs is provided by the option to purchase Print-Only versions of MacTHERMAL. You can create and modify label designs on the Design and Print version, while the Print-Only version will only allow the user to open a file, enter label quantities and print. Thus, there is no risk that inexperienced staff could make unintentional and costly changes to label designs. Also, Prompted Fields make the addition of variable data a simple task for the operator without the risk of inadvertently changing any static items.

You also have the option, with both versions of MacTHERMAL, to Pause the printer after each label variation has been printed in order to keep them separate.

Job Profile										
Var.	Qty		C-39/4		Text/15		Text/16		Pic/2	
1	24		C00203AY	SHIP TO:	REMAKE LTD91 C...		4 3/4" Round Hea...		Round	
2	70		C02873SI	SHIP TO:	A.D.U. LTDBEEST...		1 1/2" bolt		Bolts1	
3	25		C02937NK	SHIP TO:	DEKERD GMBH1 7...		1 1/4" bolt		Bolts1	
4	10		C01124SS	SHIP TO:	A.D.U. LTDBEEST...		1 3/4" Bevel Scr...		Screws	
5	12		C09299LS	SHIP TO:	TYRELL CORP201...		2 1/2" Bevel Scr...		Screws	
6	150		C09858AB	SHIP TO:	A.D.U. LTDBEEST...		Bolt Screw		Bolt Sd	

The Import Variations function is not only limited to text. Bar code numbers (with or without check digits) may be imported, automatically verified and converted to bar code images. Graphics, also can be imported: if the name of a graphic file on disk matches the text in the data file the image is automatically placed on the label. You also have

MacTHERMAL also supports AppleScript, which gives it the ability to be controlled from other programs. Other applications on the same computer or across the network can launch MacTHERMAL, open a pre-designed label layout, import content from a text file, and then print to the thermal printer. The benefit of this feature is that customized systems can be quickly engineered (often within one or two days), which are tailored to a customers specific needs.

In addition to the comprehensive features we've already described, MacTHERMAL has a very powerful user interface:

We've listened to users to find out which features they require to maximise productivity: **Zoomed Views** provides 25% to 400% magnification so you can accurately edit even the smallest design.

The **Field Info** feature helps with accurate placement of all elements.

**Rotation** of any field in 90° increments is quick and easy.

The **Merge Fields** option lets you merge the content of any number of fields into a single field with optional separation characters (e.g. Return or Tab). You can also remove blank lines from database fields, e.g. for address labels.

**MacThermal** comes complete with a dedicated Mac-to-printer cable which is configured specially for your model of thermal printer. We also offer unlimited free telephone support on all aspects of MacThermals operation.

*A free demonstration copy of MacThermal is available on request.*



**Computalabel**  
INTERNATIONAL LTD

**Head Office**

53a London Road  
Leicester  
LE2 0PD  
UK  
Tel: +44 116 255 7898  
Fax: +44 116 255 7899

**U.S. Office:**

28 Green Street  
Newbury, MA  
01951-1711  
USA  
Tel: 978 462 0993  
Fax: 978 462 9198

eMail [Info@computalabel.com](mailto:Info@computalabel.com)  
HomePage [www.computalabel.com](http://www.computalabel.com)

**System Requirements**

Any Macintosh from SE onwards.

System 6.04 or later

At least 500K free memory

1 MB free disk space



Mac™ OS

Mac and the Mac OS logo are trademarks of Apple Computer Inc., used under license

MacBARCODA is a registered trademark of Computalabel International Ltd. Other trademarks are recognised as the property of their various owners.  
©Computalabel International Limited 1999